



Prairie View Industrial Center

Ames, Iowa

Available acres: 730

Property and area

Prairie View Industrial Center is a 730 industrial acre site located within the city limits of Ames, Iowa. Access to transportation is a plus as it is centrally located just east of Interstate 35 and north of four-lane U.S. Highway 30. The Union Pacific Railroad serves the property off the adjacent double track east to west mainline.

Ames sits just 30 miles north of Des Moines – the largest city in Iowa and hosts major employers including Barilla, Amcor Rigid Plastics, BASF, 3M and many others. Prairie View's location allows tenants immediate access to one of North America's premiere research institutions, Iowa State University, which specializes in food processing and ag-biotech manufacturing.

Site details

Available acres: 730

Topography: Flat

Zoning: Agriculture

Setting: Industrial center

Within city limits: Yes

Transportation

Nearest interstate: I-35, Western boundary of site

Nearest four-lane highway: U.S. Highway 30, Southern boundary of the site

Nearest commercial airport: Des Moines International Airport - 39 miles

Rail served: Yes – Union Pacific

Utilities

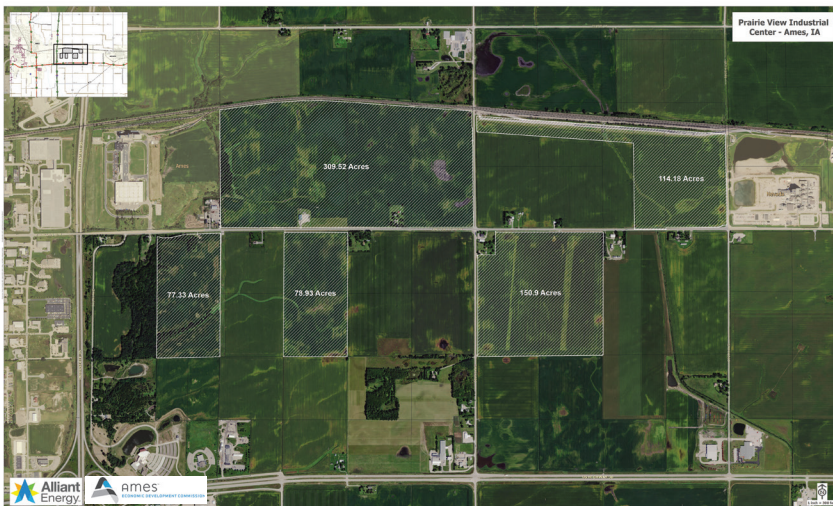
Electric: Alliant Energy

Gas: Alliant Energy

Telecommunications: Redundant fiber, active Ethernet and dark fiber – multiple providers

Sewer distribution: City of Ames

Water distribution: City of Ames



PRAIRIE VIEW INDUSTRIAL CENTER

County Road E41 (Lincoln Highway)
Ames, Iowa 50010

OFFERING

Sale price: \$25,000 per acre

CONTACT

Steven Shupp | Senior Economic
Development Manager

Alliant Energy
200 1st St. SE
Cedar Rapids, IA 52401

(319) 786-4397 (office) | (319) 540-4835 (cell)
stevenshupp@alliantenergy.com